



STEINEL LIGHTING SENSORS

Setting the Standard in Presence Detection

Invention in action. For every job.

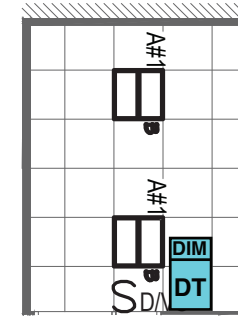


DT VS DIM

0-10 Volt Dimming Wall Switch Occupancy Sensor

Small Spaces That Require Dimming And Energy Code Requires Manual On Only (Ex. California Offices)

This sensor offers both passive infrared and 40 kHz Ultrasonic vacancy-detection. Stay energy code compliant with manual on and enjoy dimming capability in commercial spaces 12' x12' or less, such as small single offices.



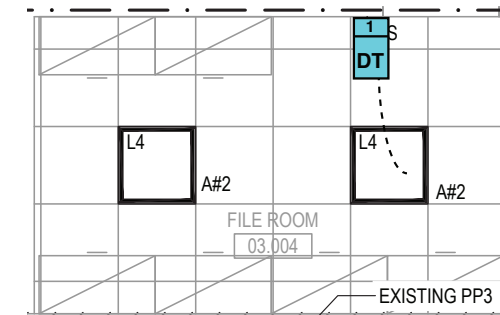
DT-WLS-DIM / DT-VS-DIM
SINGLE OFFICE WITH DIMMING

DT VS 1

Wall Switch Vacancy Sensor

Small Spaces That Do Not Require Dimming And Energy Code Requires Manual On Only, California Offices

This sensor offers both passive infrared and 40 kHz Ultrasonic vacancy-detection. Stay energy code compliant with manual on capability in commercial spaces 12' x12' or less, such as a file room.



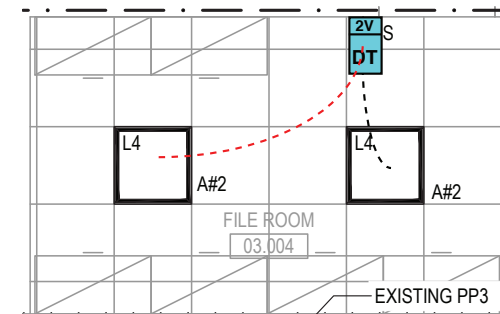
DT-WLS-1 / DT-VS-1
SMALL SPACE NOT REQUIRING DIMMING

DT VS 2

Wall Switch Vacancy Sensor

Retrofit Energy Code Requirement Where You Don't Go To Dimming, 12x12 Offices Or Smaller

This sensor offers both passive infrared and 40 kHz Ultrasonic vacancy-detection. Retrofit for energy code compliance with manual on capability in commercial spaces 12' x12' or less, such as boardrooms.



DT-WLS-2 / DT-VS-2
SMALL SPACE NOT REQUIRING DIMMING





IR VS 1

Wall Switch Vacancy Sensor

Small Offices With Clear Line Of Sight That Require Dimming And Energy Code Compliance For Manual On

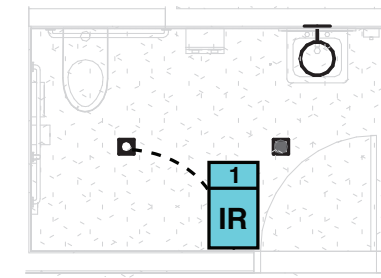
This passive infrared vacancy-detecting wall sensor offers manual on capability for code compliance in commercial spaces with clear line sight, such as a bathroom.

IR VS DIM

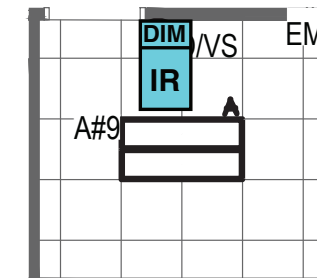
0-10 Volt Dimming Wall Switch Vacancy Sensor

Small Offices With Clear Line Of Sight That Require Dimming And Energy Code Compliance For Manual On With Dimming

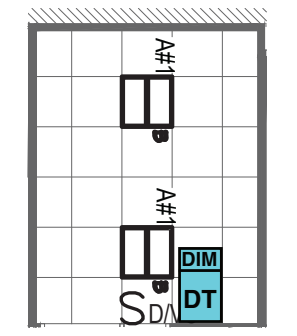
This passive infrared vacancy-detecting wall sensor offers dimming and manual on capability for code compliance in commercial spaces with clear line sight, such as small offices and open workspaces.



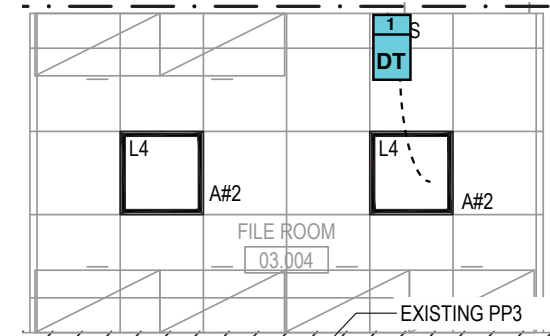
IR-WLS-1 / IR-VS-1
SINGLE BATHROOM



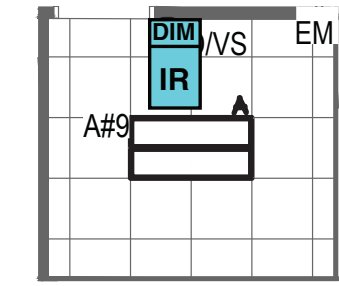
IR-WLS-DIM / IR-VS-DIM
SINGLE SMALL OFFICE WITH DIMMING



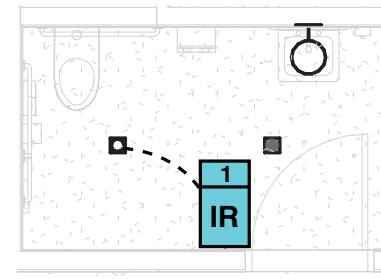
DT-WLS-DIM / DT-VS-DIM
SINGLE OFFICE WITH DIMMING



DT-WLS-1 / DT-VS-1
SMALL SPACE NOT REQUIRING DIMMING



IR-WLS-DIM / IR-VS-DIM
SINGLE SMALL OFFICE WITH DIMMING



IR-WLS-1 / IR-VS-1
SINGLE BATHROOM



DT WLS DIM

0-10 Volt Dimming Wall Switch Occupancy Sensor

Small offices for 0-10 v dimming

This occupancy-detecting wall sensor provides dimming capability and lighting control in commercial spaces 12' x12' or less, such as lobbies and breakrooms.



IR WLS DIM

0-10 Volt Dimming Wall Switch Occupancy Sensor

Small Offices With Clear Line Sight That Require Dimming

This passive infrared occupancy-detecting wall sensor provides dimming capability and lighting control in commercial spaces with clear line sight, such as small offices and open workspaces.



DT WLS 1

Wall Switch Occupancy Sensor

12x12 Space Or Less With Single On/Off Control Break Rooms

This occupancy-detecting wall sensor provides on/off lighting control in commercial spaces 12' x12' or less, such as lobbies and breakrooms.



IR WLS 1

0-10 Volt Dimming Wall Switch Occupancy Sensor

Small Offices With Clear Line Sight W/O Dimming Requirement

This passive infrared vacancy-detecting wall sensor offers dimming and manual on capability for code compliance in commercial spaces with clear line sight, such as small offices and open workspaces.



Steinel America, Inc.
9051 Lyndale Ave. South
Bloomington, MN 55420

Support: (800) 852-4343
Email: sales@steinel.net

www.steinel.net

